

A Kidd Pivot production presented by Canadian Stage

# Assembly Hall

By  
Crystal Pite and  
Jonathon Young



Renaé Sigouin - Photos: Michael Slobodian

CanadianStage

Season  
Sponsor

BMO



*Assembly Hall* is generously underwritten by Alexandra Baillie,  
by Katy Graham Debost & Cathy Graham, and by the Sabourin Family Foundation



sabourin family  
foundation



The board, staff, and artists of Canadian Stage would like to dedicate this presentation of *Assembly Hall* to Alexandra Baillie (Chair of the Board 2017-2023). Alexandra's thoughtful and intrepid leadership has been inspiring and impactful. We thank her from the bottom of our hearts.



Canadian Stage has three homes spread across our great city. The Bluma Appel and the Berkeley Street Complex bookend the vibrant St. Lawrence Market Neighbourhood and run along what was once the shore of Lake Ontario. Our beautiful High Park Amphitheatre is nestled within the grassy mounds and forests of our city's most beloved park. Canadian Stage is grateful to be able to tell our stories on this bountiful land that we all share.

This sacred land has held story for thousands of years: stories that live in the fabric of who we are as a nation. Canadian Stage would like to acknowledge and thank the original caretakers and knowledge keepers of this territory: the Anishinaabe Nations (including the Mississaugas of the Credit), the Haudenosaunee Confederacy, and the Wendat and Métis Nations. We give thanks to the Nations recorded and unrecorded, acknowledged and unacknowledged, who also share the responsibility for this territory. We honour the Dish With One Spoon Treaty and our responsibility to peaceably share and care for the resources that surround us. We are honoured to be in this meeting place called Tkaronto that many First Nations, Inuit, and Métis people from across Turtle Island call home.

A Kidd Pivot production presented by Canadian Stage

# Assembly Hall

By Crystal Pite and Jonathon Young

**Crystal Pite**  
Choreographer  
and Director

**Jonathon Young**  
Writer and Director

**Owen Belton**  
**Alessandro Juliani**  
**Meg Roe**

Composition and  
Sound Design

**Jay Gower Taylor**  
Scenic Design

**Nancy Bryant**  
Costume Design

**Tom Visser**  
Lighting Design

**Cybèle Young**  
Video Design

**Eric Chad**  
Show Control and  
Sound Programmer

**Eric Beauchesne**  
Assistant to the Creators

**Brandon Alley**  
Woody

**Livona Ellis**  
Gail

**Rakeem Hardy**  
Boyd

**Gregory Lau**  
Dave

**Doug Letheren**  
Shaun

**Rena Narumi**  
Bonnie

**Renée Sigouin**  
Glenda

**Lea Ved**  
Mae

**Meg Roe**  
Voice Director

**Ryan Beil**  
Dave (Voice)

**Marci T. House**  
Gail (Voice)

**Alessandro Juliani**  
Boyd (Voice)

**Meg Roe**  
Bonnie (Voice)

**Gabrielle Rose**  
Glenda (Voice)

**Amanda Sum**  
Mae (Voice)

**Vincent Tong**  
Woody (Voice)

**Jonathon Young**  
Shau (Voice)

**Jeff Harrison**  
Production Manager  
and Technical Director

**Yvonne Yip**  
Stage Manager

**ilvs Strauss & Eric Chad**  
Audio and Show  
Control Operators

**Donnie Tejani**  
Wardrobe Supervisor

**Great Northern**  
**Way Scene Shop**  
Set Construction

**Charlie Easton**  
**Barry Kootchin**  
**Sharon Sloan**  
**Patrick Spavor**  
Scenic Artists

**Monica Emme**  
**Jay Gower Taylor**  
**Heather Young**  
**Jen Hiebert**  
Prop Builders

**Rob Valentine and**  
**Valentine Armouries**  
Aluminum Armour

**Janet Dundas**  
Cutter

**Alaia Hamer**  
**Nicola Ryal**  
**Alice Devonshire**  
Costume Assistants  
and Builders

**Tracey Gauvin**  
**Eloise Pons**  
**Jayne Cline**  
Stitchers

**Tessa Armstrong**  
Dyer and Builder

**Nasiv Kaur Sall**  
Rehearsal Assistant

**Jim Smith**  
Executive Producer

**Francesca Piscopo**  
Producer

**Giulia D'Amanzo**  
Bluma Head of Lighting

**Keijo Makela**  
Bluma Head of Audio

**Jay Blencowe**  
Bluma Head Carpenter

**Wes Allen**  
Bluma Head of Props

**Justin Tucci**  
Bluma Flyperson

**Susan Batchelor**  
Bluma Head of Wardrobe

**Daniel Bennett**  
CS Technical Director

**Marshall Kidd**  
CS Assistant  
Technical Director

Additional Music: Tchaikovsky, Piano Concerto No. 1 in B-Flat Minor, Op. 23, TH. 55 - I. Allegro non troppo e molto maestoso - Allegro con spirito performed by Alice Sara Ott · Münchner Philharmoniker · Thomas Hengelbrock 2010 Deutsche Grammophon GmbH, Berlin

**Kidd Pivot would like to thank:**

Artemis Gordon, Barry Kootchin, Charlie Easton, Kevin Macdonald, Niko Taylor, Arts Umbrella, Ballet BC, The Dance Centre, Studio 58, Ostrom Climate, and the generous financial contributions from the Friends of Kidd Pivot.

Co-produced by Edinburgh International Festival (Edinburgh, UK), Sadler's Wells (London, UK), Théâtre de la Ville (Paris, France), Centro Servizi Culturali Santa Chiara (Trento, Italy), National Arts Centre (Ottawa, Canada), Seattle Theatre Group (Seattle, US), Canadian Stage (Toronto, Canada), DanceHouse (Vancouver, Canada), Danse Danse (Montreal, Canada), Le Diamant (Quebec, Canada), Electric Company Theatre (Vancouver, Canada).

A special thanks to the Y.P. Heung Foundation, Zita and Mark Bernstein Family Foundation, and Bonnie Mah for their generous support.

Developed with support from the National Arts Centre's National Creation Fund.



Kidd Pivot benefits from the support of BNP Paribas Foundation for the development of its projects.



Kidd Pivot gratefully acknowledges the support of the Canada Council for the Arts, the Government of British Columbia, British Columbia Arts Council, City of Vancouver, and countless individual and business supporters.



Canada Council  
for the Arts

Conseil des Arts  
du Canada



Supported by the Province of British Columbia



Canadian Stage is a member of the Professional Association of Canadian Theatres and engages professional Artists who are members of Canadian Actors' Equity Association under the terms of the jointly negotiated Canadian Theatre Agreement.

Stage Employees of the Bluma Appel Theatre are represented by Local 58 of the International Alliance of Theatrical Stage Employees



Opening Night of *Assembly Hall* is sponsored by Davies

**DAVIES**

This performance runs approximately 90 minutes with no intermissions

# Thank you

to Marilyn Baillie, C.M. and Charles Baillie, O.C. for providing foundational funding to bolster our Education and Community Outreach initiatives.



*Our education and engagement activities are central to Canadian Stage's mission. With the Baillie's generous support, we are increasing our reach and impact.*

**Brendan Healy**  
Artistic Director

*Jungle Book reimagined* Education Event. Photo: Manuel Chaves.



Great  
performances  
live here.



*The Inheritance – Part 1 & Part 2*  
Antoine Yared, Qasim Khan, and Stephen  
Jackman-Torkoff. Photo by Lorne Bridgman

**BMO**



At BMO, we take pride in our local communities, and the performers that contribute to the cultural diversity and creative richness of our cities.

We are proud to be Canadian Stage's **23.24 Season Sponsor** and the **Pay-What-You-Wish Access Sponsor**.

# Message from the Creators

Sometimes these things begin with a concrete premise or proposition, but we were starting from scratch. It was early spring, and we were meeting over coffee one bright morning for the first conversation about our next project. Neither of us knew what the other was thinking and both had come with only the faintest inkling about what terrain we might want to explore next.

By the end of that meeting though, a group of individuals had assembled in our imagination. They were gathered around the remnants of an old story - a story, it seemed to us then, that they were caring for and keeping alive. Were they Historians? Folklorists? Conservators? How had this story drawn them into its orbit? What was the connection? Perhaps these people needed this story as much as the story needed them. Or perhaps the story itself was secondary to that age-old human need to congregate; to participate in a communal activity; to be recognized and feel a sense of belonging. Then Spring became Summer, and Summer, Fall. Then Winter came and before we knew it, a year had passed.

A quick scan through our various exchanges over the course of that year reveals something of the meandering route we took to arrive at *Assembly Hall*. Although many signposts were left along the way, with headings written in bold above paragraphs of what seemed essential information at the time, the truth is, many of the paths we so eagerly blazed are now overgrown. Here are some examples from the trail:

The Shirt of St. Louis. The Lund Astronomical Clock. An Automated Display of Two-dimensional Figures. A Collection of Fragile Artifacts. *An Unexpected Reunion*, by Johann Peter Hebel.

"The spirits that I summoned I now cannot rid myself of again." Goethe

*The Quest to Fail*, the Medieval Presence in Modernist Literature, by Jonathan Ulliot.

*From Ritual to Romance*, by Jessie Weston. *Perceval*, by Chrétien De Troyes.

The Chapel Perilous. The Harrowing of Hell. The Hour of Recollection.

"Absence is the form God's presence takes in this world." Simone Weil

The Royal Antediluvian Order of Buffaloes. A History of the Elks.

The Society for Creative Anachronism.

"There is no death." Guy W. Ballard.

Roberts' Rules of Order. Ten Laws for Great Governance. *A Bunch of Amateurs* by Kim Hopkins.

A small community hall used by a variety of different groups.

Was there a more obvious, more direct route to get here? It may have been more efficient to avoid the forest and stay on the road. Then again, if we'd taken a different route, with a different group of people, this particular hall might never have been found. Despite its many mysteries, *Assembly Hall* emerged from familiar memories. It's as though we spent some of our childhood here attending recitals, or fundraisers, or ceremonies, or pageants, or potlucks. It was built by a group of people who came together on a common quest; A group of people who sat together, hour after hour, conjuring it, sketching it, speaking it into existence, listening for how it sounded, and for what it might say. A group of people who struggled to maintain and restore it when it seemed on the verge of falling apart; A group of people who believed in it and fought for it at each twist and turn. A group of people who, through the passing of seasons, filled this little hall with life. Welcome. We're grateful you're here.

- Jonathon and Crystal

Davies is proud to support  
Canadian Stage as an  
Opening Night Sponsor of  
Kidd Pivot's

# *Assembly Hall*





**Brandon Alley – Performer: Woody**

Born and raised in North Carolina, Brandon Lee Alley is a multi-hyphenate artist residing on the unceded territories of the Coast Salish Peoples: Skwxwú7mesh (Squamish), Stó:ló and Səlilwətaʔ/Səlilwətaʔ (Tseil-Waututh) and xʷməθkʷəjəm (Musqueam) Nations. Brandon began his professional career with Hubbard Street 2 followed by one year with BODYTRAFFIC in LA. In 2015, he joined Ballet BC. After 5 seasons, he continued to perform and collaborate with numerous companies and artists within Vancouver such as Company 605, Idan Cohen and Rachel Meyer. In 2022, Brandon joined Kidd Pivot for *Revisor* and was a member of the final global tour. In 2019, Brandon co-founded Dance//Novella - a contemporary dance company based in Vancouver, Canada. In addition to creating dance, Brandon is also an Audio Engineer with a diploma from SAE North Vancouver. He has made several original scores for dance and is excited to continue developing his musical journey.



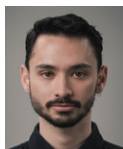
**Livona Ellis – Performer: Gail**

Livona Ellis was born in Vancouver on the unceded territories of the xʷməθkʷəjəm (Musqueam), Skwxwú7mesh (Squamish), and səlilwətaʔ (Tseil-Waututh) Nations. She has performed with Ballet BC (11 seasons), Buhnen Bern, Mascall Dance and Rachel Meyer. Livona has created works for Dances for a Small Stage, Dance Deck, Public Salon 2019, Contemporary Art Gallery Gala 2018, Arts Umbrella Season Finale, and Ballet BC Take Form. In 2017 she received the Vancouver Mayor's Arts Award for Emerging Artist and in 2023 received the inaugural Louise Bentall Biennial Award for Emerging British Choreographers. Livona joined Kidd Pivot in June 2023 and is currently collaborating with NYC based artist Rebecca Margolick on the creation of their full length duet *Fortress*.



**Rakeem Hardy – Performer: Boyd**

Rakeem Hardy (they/them), originally from Toronto, Canada, received their BFA from the State University of New York at Purchase College. In 2020, they were the recipient of the Thayer Fellowship Award. Through their time at Purchase, they performed works by Ohad Naharin, Doug Varone, Sidra Bell, Norbert De La Cruz III, and Roderick George. Rakeem has had the pleasure of performing with A.I.M by Kyle Abraham, Loni Landon Dance Projects, and Gallim Dance. Rakeem joined Kidd Pivot in 2022.



**Gregory Lau – Performer: Dave**

Gregory Lau was born in Honolulu, Hawaii where he began his training at Mid-Pacific Institute School of the Arts. After attending The Juilliard School, he moved to join Nederlands Dans Theater 2 in 2013 and went on to join Nederlands Dans Theater 1 in 2016. After leaving the Nederlands he went on to join Kidd Pivot in 2019. Gregory was featured in Doja Cat's 2021 VMAs performance. During his career he has helped to stage ballets for NDT2 and The Norwegian Opera & Ballet. He has been a recipient of the National Foundation for Advancement in the Arts Award in both Modern Dance and Ballet. He has also worked with choreographers such as Jiří Kylián, Crystal Pite, Ohad Naharin, Sharon Eyal, Camille A. Brown, Marco Goecke, Paul Lightfoot & Sol Leon, Hans Van Manen, Johan Inger, Medhi Walerski, Alexander Ekman, Imre & Marne Van Opstal and Bobbi Jean Smith.



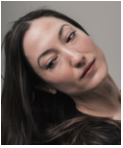
**Doug Letheren – Performer: Shaun**

Doug is from New Hampshire, USA, and is a graduate of The Juilliard School. He danced with Mikhail Baryshnikov's *Hell's Kitchen Dance* before joining the Batsheva Dance Company, where he worked with Ohad Naharin and Sharon Eyal from 2007 - 2012. Doug was then a founding member of Sharon's company, L-E-V, until 2015, and danced with the Tanztheater Wuppertal Pina Bausch from 2016 - 2019. He has also performed with the GoteborgsOperansDanskompagni, Alan Lucien Øyen's Winterguests, Aszure Barton, Adam Linder, Ella Rothschild, and in films such as Georgia Parris' *Mari* for the BBC, and *Apart* and *Voyeur*, collaborations with dancer Silas Henriksen, filmmaker Cecilie Semec, and the Norwegian Opera and Ballet. Doug has been a choreographic assistant to Sharon Eyal, Adam Linder, and Bobbi Smith for companies such as Netherlands Dance Theater, Royal Swedish Ballet, Paris Opera Ballet, and Ballet de Lorraine. He is a recipient of the 2007 Movado Future Legends Award, nominated by Mikhail Baryshnikov, and a 2019 "Der Faust" German Theater Prize nominee for Dancer of the Year. Doug joined Kidd Pivot in 2018.



**Rena Narumi – Performer: Bonnie**

Rena Narumi was born in Japan. She trained at Centre d'art chorégraphique Franco-Japonais in Paris France and Arts Umbrella dance graduate program in Vancouver BC under the direction of Artemis Gordon and Lynn Shepard. After her graduation, she performed with ProArteDanza, Hessischen Staatstheaters Wiesbaden, Royal Swedish Ballet (RSB), and Nederlands Dans Theater 1 (NDT1). She has worked with renowned choreographers such as Mats Ek, Crystal Pite, Ohad Naharin, Sol Leon/Paul Lightfoot, Johan Inger, Alexander Ekman, Orjan Andersson, Sharon Eyal, Franck Chartier/Gabriela Carrizo (Peeping Tom), Emily Molnar, and more. With RSB in Sweden, she performed the main role of Juliet in *Juliet and Romeo* by Mats Ek in many theaters, including Paris Opera Garnier in Paris and Sadler's Wells Theater in London. With NDT1, she traveled all over the world to perform. She was an apprentice with Kidd Pivot for season 2010/2011, part of the artistic team for *The You Show*. Rena is delighted to be rejoined with Kidd Pivot.



**Renée Sigouin – Performer: Glenda**

Renée was born in Saskatchewan and moved to Vancouver in 2008. Since graduating from Modus Operandi contemporary dance program in 2012, she has performed in several works with Out Innerspace Dance Theatre, Joshua Beamish/MOVETHECOMPANY, Company 605, Wen Wei Dance, Mascall Dance, Kinesis Somatheatro & EDAM. She joined Kidd Pivot in 2018.



**Lea Ved – Performer: Mae**

Lea Ved is a performing artist, creator, and collaborator from the USA. Since graduating from The Juilliard School with a BFA, she has danced internationally with RUBBERBANDance Group, The Royal Swedish Ballet, and Nederlands Dans Theater. Her most coveted and influential creation experiences have been with Victor Quijada, Crystal Pite, Hofesh Shechter, Marina Mascarell, Sharon Eyal, and performing the role of “Julia” in Mats Ek’s *Julia and Romeo*. Her more notable works as a choreographer have been produced by Göteborgsoperans Danskompani, NDT, Korzo Theater, Heavy Hitters Breakdance Crew and CaDance Festival. She has loved to lead and share a number of creative research workshops, including at b12 (Berlin), Out Innerspace (Vancouver), Gibney Dance (NYC), No)One. Art House (LA), Motion Lab (Eindhoven), and Nederlands Dans Theater. In 2024, her upcoming creation residencies include Nuova X (Torino), GibneyPRO (NYC), and b12 (Berlin).



**Crystal Pite – Co-Creator, Choreographer, & Director**

In a choreographic career spanning three decades, Crystal Pite has created over 50 works for companies including The Royal Ballet, The Paris Opera Ballet, Nederlands Dans Theater I, Cullberg Ballet, Ballett Frankfurt, The National Ballet of Canada, Ballets Jazz Montréal (resident choreographer 2001–04), and Cedar Lake Contemporary Ballet. Pite is a Member of the Order of Canada, and is the recipient of numerous awards including the Benois de la Danse, Canada Council Jacqueline Lemieux Prize, Grand Prix de la danse de Montréal, two UK Critics’ Circle Dance Awards, four Laurence Olivier Awards, and the 2022 Governor General’s Performing Arts Award. She began her dance career as a company member of Ballet British Columbia (Ballet BC), then William Forsythe’s Ballett Frankfurt, and is currently Associate Choreographer of Nederlands Dans Theater I, Associate Dance Artist of Canada’s National Arts Centre, and Associate Artist at Sadler’s Wells in London. She holds an honorary Doctorate of Fine Arts from Simon Fraser University and is a Member of the Order of Canada. In 2002, she formed Kidd Pivot in Vancouver.



**Jonathon Young - Co-Creator, Writer, Director, Voice Actor**

Jonathon Young is playwright-in-residence at Kidd Pivot and a core artist and co-founder of Electric Company Theatre, where he has created and performed in over 20 original productions since the company was formed in 1996. He has worked as an actor on stages across Canada including Soulpepper Theatre (*King Lear*), Coalmine Theatre (*Knives in Hens*), Luminato Festival, Vancouver Playhouse (*Full Light of Day*), Necessary Angel (*All but Gone*), Theatre Calgary, (*No Exit, The Great Gatsby*), Bard on the Beach, (*Hamlet*). *Assembly Hall* is the third full-length work created with Crystal Pite after *Betroffenheit* (2015) and *Revisor* (2019). In addition, he wrote the text for two projects at Nederlands Dans Theater (*Parade* and *The Statement*). Jonathon is the recipient of the UK National Dance Award.



**Owen Belton – Co-Composer & Sound Designer**

Owen Belton lives in Vancouver, Canada and graduated from Simon Fraser University with a degree in Fine and Performing Arts (concentration Music). He has been composing for dance for the last 25 years as well as creating sound design and music for live theatre for the past 15 years. Owen has created pieces for The Paris Opera, Ballet Nuremberg, Electric Company Theatre, The Arts Club, as well as Nederlands Dans Theatre and of course Kidd Pivot.



**Alessandro Juliani - Co-Composer, Sound Designer, Voice Actor**

Alessandro is a Vancouver-based multi-disciplinary artist. He has previously collaborated with Kidd Pivot as a composer and sound designer on *Revisor*, *Betroffenheit*, and *Tempest Replica*. Other credits include: *The Lady from the Sea*, *Trifles*, *Prince Caspian*, *On The Razzle* and *Middletown* (Shaw Festival/Crow's Theatre); *To Kill A Mockingbird* (Stratford Festival); *The Great Leap*, *Angels in America: Millennium Approaches* and *Perestroika*, *Saint Joan*, *Master Class*, *The Penelopiad*. (Arts Club); *Coriolanus*, *Timon of Athens*, *The Tempest*, *Hamlet*, *Twelfth Night*, *Troilus and Cressida*, *Rosencrantz and Guildenstern are Dead*, *Bard on the Beach*; *King Lear* (NAC); *All the Way Home*, *Palace Grand*, *Electric Company*; *Vigil*, *Mark Taper Forum*, *A.C.T.* (Theatre Calgary); *You used to call me Marie*, *Savage Society*; *Bunny*, *Search Party*; *Little Women*, Theatre Calgary; *The Madonna Painter* (Centaur Theatre); *The Miracle Worker*, *Equus* (Vancouver Playhouse). Film and TV credits include: *Donkeyhead* (Netflix); *Big Trees* (NFB); *Wait for Rain* (Motion 58).



### **Meg Roe – Voice Director, Co-Composer, Sound Designer, Voice Actor**

Meg's work as an actor, director, composer, sound designer, and dramaturg has been seen across the Canada at Crows Theatre, Shaw Festival, Theatre Calgary, Canadian Stage, Factory Theatre, PuSh Festival, Alberta Theatre Projects, SoulPepper, Bard on the Beach, Theatre Junction, Citadel Theatre, Ruby Slippers Theatre, Electric Company Theatre, Blackbird Theatre, Theatre Aquarius, Arts Club, Belfry, Theatre SKAM, Manitoba Theatre Centre, Catalyst Theatre, RealWheels, Intrepid Theatre, Elbow Theatre, Vancouver Playhouse, Western Canada Theatre, National Arts Centre, Centaur Theatre, The Banff Centre, Yukon Arts Centre, Prairie Theatre Exchange, Why Not Theatre, Savage Society, vAct, Theatre Replacement, Rumble Theatre, The Cultch, Prairie Theatre Exchange, Luminato Festival, and internationally with the American Conservatory Theatre (San Francisco), Center Theater Group (Los Angeles), and as a collaborator with Crystal Pite's renowned dance company Kidd Pivot. She scored Esie Mensah's short film *Tessel*, and Why Not Theatre's feature *What You Won't Do For Love*.



### **Jay Gower Taylor - Scenic Design**

As a scenic designer Jay Gower Taylor has collaborated with Crystal Pite since 2008, creating onstage environments for works such as *Figures in Extinction* [1.0], *The Statement*, *Parade*, *Plot Point*, *Frontier*, *Solo Echo*, *In the Event* and *Partita for 8 Dancers*, for Nederlands Dans Theater 1; *Emergence and Angels' Atlas* (a co-production with Zurich Ballet) for the National Ballet of Canada; *Polaris* for Sadler's Wells; *The Seasons' Canon* and *Body and Soul* for The Paris Opera Ballet; and *Flight Pattern / Light of Passage* for The Royal Ballet. For Pite's own company, Kidd Pivot, he designed *Dark Matters*, *The Tempest Replica*, *Betroffenheit*, and most recently, *Revisor*.



### **Nancy Bryant - Costume Designer**

Nancy Bryant works widely as a designer in dance, theatre, opera and film. Her home is on the west coast of Canada in Vancouver. Previous collaborations with Pite include *Body and Soul* and *The Seasons' Canon* (Paris Opera), *Flight Pattern* (Royal Ballet), *Figures in Extinction*, *Partita*, *Parade* and *Plot Point* (Netherlands Dance Theater), *Revisor*, *The Tempest Replica* (Kidd Pivot) and *Betroffenheit* (Kidd Pivot/Electric Co.), *Angels' Atlas* (National Ballet of Canada / Zurich Opera House), and most recently, *Light of Passage* (Royal Ballet / Norwegian National Ballet). Bryant's work has brought her together with various teams of fellow designers, directors, writers and choreographers to theatres and production workshops across Canada, the USA, the UK and to Europe. Her approach to costume design has been influenced by her visual arts background and many years of exceptional collaborations with some of Canada's most innovative and groundbreaking theatre artists.

**We believe that when people participate in their community, good things can happen.**

**TD is proud to support Canadian Stage.**

As part of our goal to help people feel a sense of belonging in their communities, TD supports arts and culture events, initiatives, and organizations across North America that amplify diverse voices.

**Learn more at [td.com/artsandculture](https://td.com/artsandculture)**



**TD READY  
COMMITMENT**

© The TD logo and other TD trademarks are the property of The Toronto-Dominion Bank or its subsidiaries.





### **Tom Visser - Lighting Designer**

Tom Visser grew up in the countryside of west Ireland. At the age of 18 he started working in music theatre through his theatrical family and in dance through the Nederlands Dans Theater. Since 2005 he has created original designs for choreographers including Crystal Pite, Alexander Ekman, Johan Inger, Stijn Celis, Lukas Timulak, Sharon Eyal, Hofesh Shechter, and more.



### **Cybèle Young - Video Designer**

Cybèle Young is a multidisciplinary artist and author best known for her intricate Japanese paper installations and children's books. More recently, her practice has encompassed photography, ceramics, stop-motion film, video, and kinetic works. Young's works form relationships where the mundane coincides with the surreal, and the ebb and flow of growth and regression reside on equal planes. Sculptures manifest as one-act plays, and large tableaux map clues to epic stories. She studied at the Ontario College of Art and Design, since having mounted over twenty solo and thirty group exhibitions, and has received multiple grants and awards, including Canada's Governor General's Award. Cybèle is represented by Forum Gallery NYC, and her books are published worldwide, currently with Penguin Random House.



### **Eric Chad – Show Control & Sound Programmer**

Eric Chad is an lighting/projection artist and show control/integration specialist based in Vancouver, B.C. Eric's work blends interactive elements, generative design, and live tracking into his love for natural forms. Eric's recent credits include works with Emma Portner, Electric Company Theatre, Out Innerspace Dance Theatre, Crystal Pite, Action at a Distance, Joe Ink, Plastic Orchid Factory, Shay Kubler Radical System Art, Kidd Pivot, and Chuthis. Eric is one of the founding members, and the current Technical Director of Lobe Studio in Vancouver BC, the first permanent 4DSOUND venue in North America. Eric was also a primary designer on Sanctuary: The Dakota Bear Ancient Forest Experience, and The Canadian Pavilion at the Dubai Expo. Eric received his Master of Fine Arts from the University of British Columbia, and a Bachelor of Science from McGill University.



### **Eric Beaudesne - Assistant to the Creators**

Born in Québec, Eric has been on stage with Les Grands Ballets Canadiens, the Badisches Staatstheater Karlsruhe and Les Ballets Jazz de Montréal, as well as with Canadian contemporary dance icons such as La Fondation Jean-Pierre Perrault, Paul-André Fortier, Louise Lecavalier and Crystal Pite. Company member since 2004, Eric now collaborates with Kidd Pivot as associate artistic director, and stages Pite's work on companies worldwide. Eric has served as guest teacher for several organizations as well as rehearsal director for Nederlands Dans Theater. He currently resides in Holland and devotes his spare time advocating for climate action in the dance world.

*"An extraordinary play... astonishingly artful"*

—The New York Times

A Back to Back Theatre production  
presented by Canadian Stage

# Shadow Whose Prey the Hunter Becomes

January 18 – 28, 2024

Marilyn and Charles Baillie Theatre

[Get your tickets now!](#)

*Simon Laherty. Photo by Jeff Busby*



# KIDD PIVOT

World-renowned for radical hybrids of dance and theatre, Kidd Pivot creations are assembled with a keen sense of wit and invention. Led by Canadian choreographer and director Crystal Pite, the company is unflinching in the face of such challenging and complex themes as trauma, addiction, conflict, consciousness and mortality. Pite's bold and original vision has earned her international acclaim and inspired an entire generation of dance artists.

Kidd Pivot strives to distill and translate universal questions into artworks that connect us to profound and essential parts of humanity. "Running through all of our work is the question of what moves us," says Pite.

Kidd Pivot tours internationally with critically acclaimed works such as *Betroffenheit* and *Revisor* (both co-created with playwright Jonathon Young), *The Tempest Replica*, *Dark Matters*, *Lost Action*, and *The You Show*.

Since 2015, Kidd Pivot has measured its touring carbon footprint and offset over 1000 tonnes of CO<sub>2</sub>e (carbon dioxide equivalent), enabling Kidd Pivot to be one of the first dance companies to tour carbon neutral.

## Kidd Pivot

---

### **Crystal Pite**

Artistic Director

### **Eric Beauchesne**

Associate Artistic Director

### **Jonathon Young**

Playwright-in-Residence

### **Jim Smith\***

Executive Director

### **Francesca Piscopo\***

Producer

### **Sabine Rouques\***

Special Projects

### **Jonathan James\***

Communications and Marketing Manager

### **Ann Hepper\***

Accounts Manager

### **Jeff Harrison**

Production Manager

### **Brent Belsher**

Fundraising Associate & Company Manager on Tour

### **Tammi Tsang\***

Fundraising Coordinator

### **Kevin Soo-Loosin\***

Administration Assistant

### **Eponymous (Canada)**

**Menno Plukker Theatre Agent Inc. (International)**

**Menno Plukker, assisted by Magdalena Marszalek and Isaïe Richard**

Representation for Kidd Pivot

\* Eponymous

Eponymous gratefully acknowledges the support of the Canada Council for the Arts.

## Board of Directors

---

### **Ainslie Cyopik**

President

### **Barry McKinnon**

Vice President

### **Fiona Hanington**

Treasurer

### **Dory Dynna**

Secretary

### **Guy Riecken**

Past President

### **Valerie Jerome**

**Derek Porter**

Directors

# Our Family of Supporters

## Annual Donors, Sponsors and Members

Canadian Stage is deeply grateful to the many individuals and organizations that supported our activities during the 22.23 season. They allowed us to invest in artists, build our pipeline of new work and present artistic experiences at the highest levels.

### Artistic Director's Circle

#### \$100,000+

BMO Financial Group  
The Slight Family Foundation

#### \$50,000-\$99,999

Marilyn Baillie, C.M. & Charles Baillie, O.C.  
David W. Binet  
John & Nancy Embry  
The William and Nona Heaslip Foundation  
TD Bank Group through the Ready Commitment

#### \$25,000-\$49,999

Mark & Gail Appel  
The Azrieli Foundation  
Alexandra Baillie  
J.P. Bickell Foundation  
Kiki Delaney  
Katy Graham Debost  
The Henry White Kinnear Foundation  
Michelle Koerner  
Paul Maranger & Robert Brown  
Trina McQueen, O.C.  
Shawn McReynolds & Elaine Kierans  
Metcalf Foundation  
Polar Asset Management Partners  
The Sabourin Family Foundation  
The Shishler Family  
Anonymous

### Producer's Club

#### \$10,000 - \$24,999

The Marion Armstrong Charitable Foundation  
Hugh Clark  
Huw Evans & Kathryn Bird  
Sheila Goldman  
Brendan Healy  
Ken Hugessen & Jennifer Connolly  
Greg Lemaich & Julie Sutherland

Fabio Mascarin Foundation  
Maureen & Roger Parkinson  
Remembering Otto and Marie Pick  
Charitable Foundation  
Sandra & Jim Pitblado, C.M.  
Polar Foundation  
Frances & Tim Price

#### \$5,000 - \$9,999

Sara & Dr. Michael Angel  
Tony Baylis  
Adam and Gayle Burke  
Chartwell Retirement Residences  
Susan Crocker & John Hunkin  
Joan & Clifford Hatch Foundation  
Kathy Inch & Steve Simpson  
Kingfisher Foundation  
Ron Lalonde & Jane Humphreys  
Anonymous

#### \$2,000 - \$4,999

The Paul Butler and Chris Black  
Foundation at Toronto Foundation  
Lynn Curry  
Lynn Eakin  
Dr. Roy Eappen  
Monica Esteves & Chris Bretz  
Marjorie Fainer  
Robert & Julia Foster  
Linda Glover & Ian de Verteuil  
Colin Gruchy  
Colin Hennigar & Justine Turner  
Angela Herwin  
Nancy Jain  
Nina Josefowitz  
Ian & Dorothy MacDonald  
Gail MacNaughton  
Heather McMartin & David Lightheart  
Vafa Mirzaagha

John Montesano  
Robert Morassutti  
Perry Orestes & Tim Giguere  
The Racioppo Family Foundation  
Linda Reed  
Gabrielle & Greg Richards  
In Memory of John and Norma Rogers  
Helena Ruken  
Sylvia M.G. Soyka in honour  
of Heather McMartin  
Doug & Gail Todgham  
Beth Toombs  
Antoinette Tummillo & John Carter  
Rajesh Uttamchandani  
David S Weinberg  
Carole Winberg  
Susan Wortzman

### **City Builders Members**

#### **Principals**

Kingsett Capital  
SvN Architects + Planners  
Vandyk Properties

#### **Partners**

Allied Properties REIT  
Castlepoint Numa  
Diamond Schmitt  
EllisDon  
Enwave Energy  
ERA  
KPMB  
RAW Design  
TAS

### **Theatre Ball 2023 Supporters**

Nimal Amitirigala  
Sara & Dr. Michael Angel  
Alexandra Baillie  
Khalidah Bello  
David W. Binet  
Bond Paving & Construction  
Boszko & Verity  
David Bronskill & Mark Dilworth  
CIBC  
Hugh Clark  
Deloitte Canada  
Diamond Schmitt  
Nina Josefowitz

Colin Hennigar and Justine Turner  
Hogg, Shain & Sheck Professional Corporation  
Ken Hugessen & Jennifer Connolly  
Kingsett Capital  
Paul Maranger & Robert Brown  
Fabio Mascarin Foundation  
Trina McQueen, O.C.  
Shawn McReynolds & Elaine Kierans  
Mirzaagha Investments  
Polar Asset Management Partners  
Smith + Andersen  
Raman Srivastava  
SvN Architects + Planners  
TAS  
Vandana Taxali  
Torys LLP  
Veltri Wealth Management  
Elmira Yousefi  
Anonymous (2)

# Lifetime Giving

Canadian Stage wishes to thank the generous contributions from individuals and corporations whose lifetime financial contributions to the company exceed \$100,000.

## **Above \$2,000,000**

Bram & Bluma Appel  
The Bluma Appel Community Trust  
BMO Financial Group  
TD Bank Group

## **\$1,000,000 - \$1,999,999**

Marilyn Baillie, C.M. & Charles Baillie, O.C  
CIBC  
Sandra Simpson

## **\$500,000 - \$999,999**

BMO Harris Private Banking  
Susan Crocker, C.M. & John Hunkin, C.M.  
John & Nancy Embry  
Imperial Oil Foundation  
Ron Lalonde & Jane Humphreys  
William MacKinnon  
Manulife Financial  
Maureen & Roger Parkinson  
RBC Foundation  
Scotiabank  
St. Joseph Communications  
Anonymous

## **\$250,000 - \$499,999**

David W. Binet  
Canada Life  
Hal Jackman Foundation  
The Henry White Kinnear Foundation  
Laidlaw Foundation  
Loblaw Companies Limited  
Metcalf Foundation  
Ontario Trillium Foundation  
Jack & Judith Rose  
The Sabourin Family Foundation  
Sylvia Soyka  
Sun Life Financial  
Anonymous

## **\$100,000 - \$249,999**

Alexandra Baillie  
The Azrieli Foundation  
Cathy Bateman  
Jill E. Black & Barry Allan  
Susan & Hans Brenninkmeyer  
The Brian Linehan Charitable Foundation  
M. Joan Chalmers C.C., O.Ont & Barbara Amesbury  
Peter & Frances Chiddy  
Hugh Clark  
Mark & Ann Curry  
Deloitte Foundation  
Ernst & Young LLP  
Margaret & Jim Fleck, O.C.  
GE Canada  
Peter & Dianne Gillin  
Gluskin Sheff & Associates Inc.  
Sheila Goldman  
Horace W. Goldsmith Foundation  
Barbara Hackett & John Tory  
The William & Nona Macdonald  
Heaslip Foundation  
Hewlett Packard Canada  
HSBC Bank Canada  
Ken Hugessen & Jennifer Connolly  
Intact Insurance Company  
Ed & Ann Kerwin  
KPMG Canada  
Adrian Lang & Ash Taylor  
Don & Marjorie Lenz  
Gail MacNaughton & In Memory of John MacNaughton  
John & Kay McKellar Household  
Trina McQueen, O.C.  
Molson Coors Brewing Company  
Sandra & Jim Pitblado  
Polar Foundation  
Emmanuel Pressman  
Timothy & Frances Price  
PwC Canada

Shawn McReynolds & Elaine Kierans  
Penny & Robert Richards  
Jim Riley & Nicole Sigouin  
Edward S. Rogers  
Rogers Communications Inc.  
Ellen & Brian Rose  
Schuyler Bankes & Family  
The Estate of Stanley Shaw  
TC Energy  
Tridel Corporation  
Chip & Barbara Vallis  
Arlene & Michael Willis  
Julie, Peter & James in Memory of  
John David Wood  
Anonymous (2)

## Legacy Giving

We are grateful to the following individuals who have very thoughtfully and generously remembered Canadian Stage in their estates.

The Estate of Bluma Appel  
The Estate of Kenneth C. Dawe  
The Estate of John Gordon Hunter Larry Lubin  
The Estate of Stanley Shaw  
The Estate of Helen Joan Kates

These listings include donations received between July 1, 2022 and June 30, 2023.

We have made every effort to ensure proper recognition. If, however, your name has been accidentally omitted, listed incorrectly, or misspelled, we apologize. Please notify us at [donate@canadianstage.com](mailto:donate@canadianstage.com) with any corrections.

# A round of applause

THE  
**SLAIGHT**  
FAMILY  
FOUNDATION

Many thanks to The Slight Family Foundation for your transformational theatre initiative. Your commitment of \$15 million to 22 Canadian theatre companies and training institutions is having a profound impact.



“

*The remarkable commitment from the Slight Family Foundation substantially strengthens Canadian Stage's resilience as we navigate the challenges and opportunities in our post-pandemic recovery. Their generous contribution supports our innovative initiatives, expanding our efforts to empower artists and engage audiences.*

*This extraordinary investment not only helps us overcome the challenges posed by the sector's reopening, after the extended pandemic closures, but also leaves a lasting legacy that will resonate throughout the arts community.”*

— Brendan Healy & Monica Esteves

# Canadian Stage

## Board of Directors

Hugh Clark  
**Chair**

Adam Burke  
**Treasurer**

Huw Evans  
**Secretary**

Nimal Amitirigala

Sara Angel

Alexandra Baillie

Navin Bhat

David Bronskill

Rupinder Dhillon

Councillor Paula Fletcher

Colin Hennigar

Nina Josefowitz

Elaine Kierans

Frances Mahil

Fabio Mascarin

Trina McQueen

Qasim Mohammed

John Montesano

Vanessa Pfaff

Drew Sinclair

Julie Sutherland

Vandana Taxali

## Management

Brendan Healy  
**Artistic Director**

Monica Esteves  
**Executive Director**

Beth Toombs  
**Director of Finance  
and Administration**

Heather McMartin  
**Director of Development  
and Campaigns**

Elissa Horscroft  
**Director of Production  
and Facilities**

Tanya Doroslovac  
**Director of Marketing  
and Communications**

## Artistic

Lynanne Sparrow  
**Producer**

Jordan Laffrenier  
**Associate Artistic Director**

Laurie Merredew  
**Company Manager**

JR Williams  
**RBC Emerging Artist  
Producing Intern**

## Development

Chris Faulkner  
**Senior Manager,  
Government Relations  
and Foundations**

Derolyn Kinkead  
**Senior Manager of  
Corporate Development**

Luisa Kurtz  
**Senior Manager,  
Individual Giving**

Gillian Hoff  
**Manager of Special Events**

Shaneill Floyd-Wlazlak  
**Development Coordinator**

## Finance & Administration

Sunitha Rai  
**Manager, Payroll  
Administration  
and HR Support**

Kari Seppen  
**Intermediate Accountant**

Brian Parsons  
**Senior Manager, IT Services**

Ruth-Anne Yiu  
**Executive and  
Administration Assistant**

Phillip Pike  
**Data Entry Clerk,  
Accounts Payable**

## Marketing and Communications

Shannon Tigert  
**Senior Marketing Manager,  
Loyalty & Growth**

Juliana Feng  
**Assistant Manager,  
Marketing & Digital**

Madison Zinger  
**Marketing Manager,  
New Audiences**

Derek Ma  
**Graphic and Digital Manager**

Michael Crumpton  
**Senior Sales Specialist**

## Audience Services

Andrea Healy  
**Audience Services Manager**

Faisal Butt  
**Assistant Ticketing Manager**

Sydney Phillips  
Peter Genoway  
Conor Copeland  
Henrique Santesper  
Sienna Singh  
Alex Jackson  
Colette Mbariko  
**Audience Service  
Representatives**

Seamus D'Irlande  
Evelyn Barber  
Mima Hagashi  
Esther Fischer  
**Front of House**

## Production

Daniel Bennett  
**Technical Director**

Meg Woods  
**Assistant Production  
Manager**

Ian Kowalski  
**Production Coordinator**

Jillian Wardell  
**Assistant Technical Director**

Marshall Kidd  
**Assistant Technical Director**

Mary Spyrakis  
**Head of Properties**

George Nadrous  
**Building Operations  
Manager**

Josh Vlodarchyk  
**Head Technician**

Ben Junor  
**House Technician**

Finn Browne  
**Head Technician**

“★★★★★ The most important American play of the century.”

—*The Telegraph*

The  
**Inheritance** Part 1 & Part 2

Written by **Matthew Lopez**



**March 2024**

**Coming Soon**

*Antoine Yared, Qasim Khan, and Stephen Jackman-Torkoff. Photo by Lorne Bridgman*

# Thanks to our Sponsors and Funders

## Season Sponsor



## Special Foundation Support



## Major Corporate Sponsors



## Dream Pay-What-You-Wish Sponsor



## Education & Community Outreach

### Lead Donor

Marilyn & Charles  
Baillie Family Foundation

### Supporting Donor

J.P. Bickell  
Foundation

## Major Foundation Supporters



Marilyn & Charles  
Baillie Family Foundation

J.P. Bickell Foundation

The Joan and Clifford  
Hatch Foundation

The William and Nona  
Heaslip Foundation



Kingfisher Foundation

Henry White  
Kinnear Foundation



Fabio Mascarin  
Foundation

Otto & Marie Pick  
Charitable Foundation



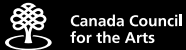
## City Builders – Principal Members



## Hotel Sponsor



## Government Support



Canada Council  
for the Arts

Conseil des Arts  
du Canada



ONTARIO ARTS COUNCIL  
CONSEIL DES ARTS DE L'ONTARIO  
an Ontario government agency  
un organisme du gouvernement de l'Ontario



Ontario  
Trillium  
Foundation

Agency of the Government of Ontario  
un organisme du gouvernement de l'Ontario



FUNDED BY  
THE CITY OF  
TORONTO

# Thank you for attending!



Follow us to stay up-to-date with Canadian Stage